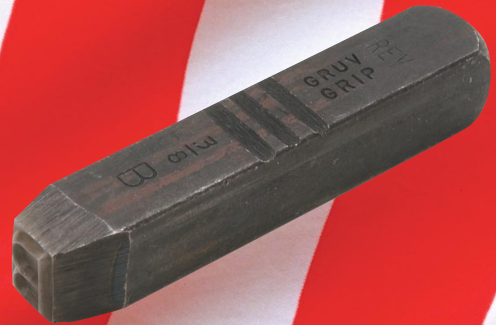
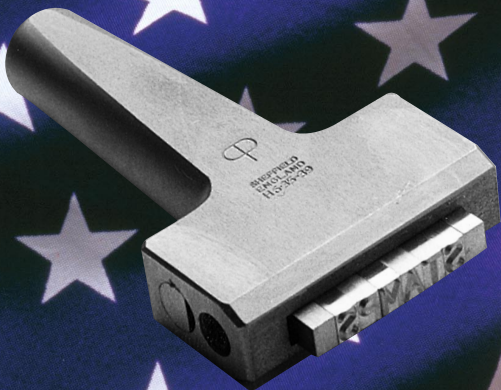


IDENTIFICATION TOOLS
GENERAL PRODUCT CATALOG



Young Bros.
Stamp Works Inc.
Since 1904

BRASS



Young Bros. Stamp Works Inc.

YOUR COMPLETE SOURCE FOR IDENTIFICATION TOOLS.

When you order Young Bros. Identification Tools, you know you're getting the very best. Our name stands for quality in steel stamps, brass stencils and steel type. All are in stock and ready for delivery.

THE BEST MATERIALS MAKE THE BEST STAMPS.

All of our steel stamps are made with carbon tool steel. They're tough enough to keep on stamping long after other stamps lose their face. **Young Bros. Stamps will mark material up to 50 on the Rockwell C Scale.** We use a special heat treatment so they won't shatter under stress. Each stamp is manufactured to our high standards right here in the U.S.A.

THE EASIEST WAY TO MAKE YOUR MARK.

Young Bros. Gruv-Grip steel letter and figure stamps are furnished in Gothic-style characters, level on the face and square with the shank, with crowned hammer ends. Each stamp has the exclusive, dual-purpose thumb groove for a sure grip. Finding the thumb side is easy, even in low light. These features ensure a good, accurate impression.

FAST SERVICE & IMMEDIATE SHIPPING.

At Young Bros. we put our customers first. When you call, you will speak with one of our friendly representatives who will answer any questions you may have and make sure you get exactly what you need. Call us toll-free at 800.553.8248 or fax 800.982.0011. You can also place an order at www.youngbrosstampworks.com, 24 hours a day, 7 days a week. We have immediate order processing for in-stock items, so you will receive your order quickly and efficiently.

OUR WARRANTY

Young Bros. Stamp Works Inc. warrants to replace, at no charge, defective steel stamps which, upon our examination, have failed due to faulty materials or workmanship. This warranty does not cover abuse, normal wear or careless handling and is void if the stamp has been altered. No other warranty is expressed or implied.

TO DETERMINE SHARP FACE CHARACTER SIZE

It is not unusual to overestimate the size of character needed. A character is measured from cutting edge to cutting edge. Impression size may vary with the depth of penetration. Correct character size can be easily specified by using the following standardized guide. If in doubt when reordering stamps, send us an impression for identification.

NO MINIMUM ORDER - NO MINIMUM CHARGE.

1/32	1/16	3/32	1/8	5/32	3/16	1/4	5/16	3/8	1/2	5/8
.8mm	1.6mm	2.4mm	3.2mm	4.0mm	4.8mm	6.4mm	7.9mm	9.5mm	12.7mm	15.9mm



IDENTIFY ALMOST ANYTHING!



STEP 1:
Draw guidelines on the item to be marked. **NOTE:** on tools, avoid hardened or tempered surfaces. Position item on a flat, solid surface.



STEP 2:
Align groove with thumb, firmly grasp the stamp halfway down the shank.



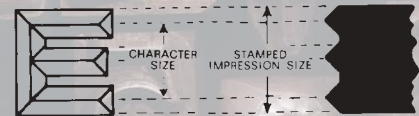
STEP 3:
Position the stamp between the guidelines. Rest hand firmly on the item to be marked.

STEP 4:
With a moderate but solid blow of a hammer, the item is marked!

Remember: when working with steel stamps, wear safety glasses to prevent flying particles from damaging your eyes.

Impression or character face

Side view of stamp



All sharp-faced stamps have a 45-degree bevel.

MACHINE MADE

More marks per dollar with this economical, quality steel stamp.

Sharp characters in Gothic style ensure deep, clear impressions.

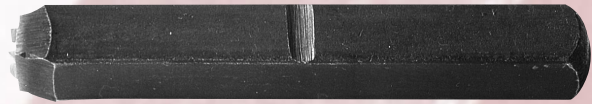
One thumb groove.



SHELF TALKING PACKAGE

Our machine-made letter, figure and combination steel stamp sets in sizes 1/16" through 1/4" feature a full-color sleeve wrap enclosing our popular wooden box with lid.

MACHINE MADE



Single Machine Made pieces can be purchased in sizes listed below. When ordering single stamps, please use the item code from the stamp set plus the character required.

Example: LETTER 03271 – Y FIGURE 03091 – 3

LETTER SETS (27 CHARACTERS)

Item Code	Size Inch	Wt. Lbs.	Size of Steel	
			Sq.	Length
01271	1/16	1-1/2	1/4	2-3/8
02271	3/32	1-1/2	1/4	2-3/8
03271	1/8	1-1/2	1/4	2-3/8
05271	3/16	2	5/16	2-7/16
06271	1/4	3	3/8	2-5/8
07271	5/16	4-1/2	7/16	2-7/8
08271	3/8	6	1/2	2-7/8
09271	1/2	10-3/4	5/8	3-3/8



FIGURE SETS (9 CHARACTERS)

Item Code	Size Inch	Wt. Lbs.	Size of Steel	
			Sq.	Length
01091	1/16	1/2	1/4	2-3/8
02091	3/32	1/2	1/4	2-3/8
03091	1/8	1/2	1/4	2-3/8
05091	3/16	3/4	5/16	2-7/16
06091	1/4	1	3/8	2-5/8
07091	5/16	1-1/2	7/16	2-7/8
08091	3/8	2	1/2	2-7/8
09091	1/2	4-3/4	5/8	3-3/8

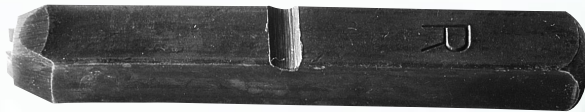


COMBINATION LETTER & FIGURE SET (36 CHARACTERS)

Item Code	Size Inch	Wt. Lbs.	Size of Steel	
			Sq.	Length
01361	1/16	2	1/4	2-3/8
02361	3/32	2	1/4	2-3/8
03361	1/8	2	1/4	2-3/8
05361	3/16	3	5/16	2-7/16
06361	1/4	4	3/8	2-5/8
07361	5/16	6	7/16	2-7/8
08361	3/8	8-1/4	1/2	2-7/8
09361	1/2	14-1/2	5/8	3-3/8



H A N D C U T



HAND-CUT

Special hand-ground taper assures precision impression alignment. Character identification and one thumb groove.

Single Hand Cut pieces can be purchased in sizes listed below. When ordering single stamps, please use the item code from the stamp set plus the character required.

Example: LETTER 03272 – B FIGURE 03092 – 4

LETTER SETS (27 CHARACTERS)

Item Code	Size Inch	Wt. Lbs.	Size of Steel Sq.	Length
01272	1/16	1-1/2	1/4	2-3/8
02272	3/32	1-1/2	1/4	2-3/8
03272	1/8	1-1/2	1/4	2-3/8
05272	3/16	2	5/16	2-7/16
06272	1/4	3	3/8	2-5/8
07272	5/16	4-1/2	7/16	2-7/8
08272	3/8	6	1/2	2-7/8
09272	1/2	10-3/4	5/8	3-3/8



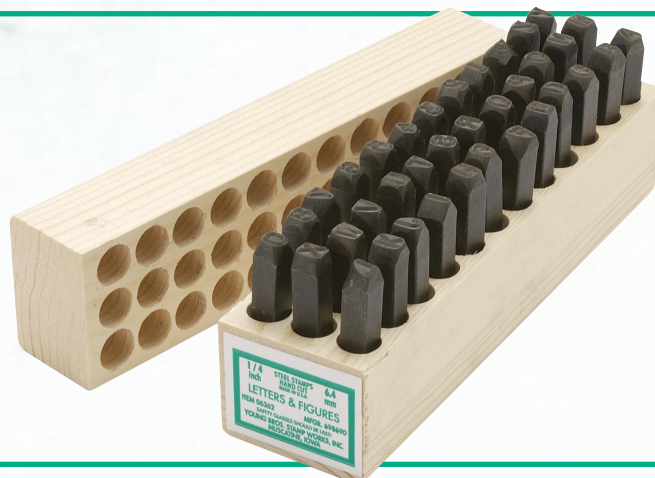
FIGURE SETS (9 CHARACTERS)

Item Code	Size Inch	Wt. Lbs.	Size of Steel Sq.	Length
01092	1/16	1/2	1/4	2-3/8
02092	3/32	1/2	1/4	2-3/8
03092	1/8	1/2	1/4	2-3/8
05092	3/16	3/4	5/16	2-7/16
06092	1/4	1	3/8	2-5/8
07092	5/16	1-1/2	7/16	2-7/8
08092	3/8	2	1/2	2-7/8
09092	1/2	4-3/4	5/8	3-3/8



HAND CUT COMBINATION (36 CHARACTERS)

Item Code	Size Inch	Wt. Lbs.	Size of Steel Sq.	Length
01362	1/16	2	1/4	2-3/8
02362	3/32	2	1/4	2-3/8
03362	1/8	2	1/4	2-3/8
05362	3/16	3	5/16	2-7/16
06362	1/4	4	3/8	2-5/8
07362	5/16	6	7/16	2-7/8
08362	3/8	8-1/4	1/2	2-7/8
09362	1/2	14-1/2	5/8	3-3/8



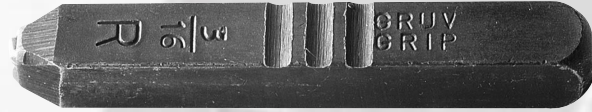
HEAVY-DUTY

Manufactured to meet the higher demands of industrial applications.

Extra heavy, extra length shank with heavy supporting bevel.

Character identification and size, three thumb grooves.

HEAVY-DUTY

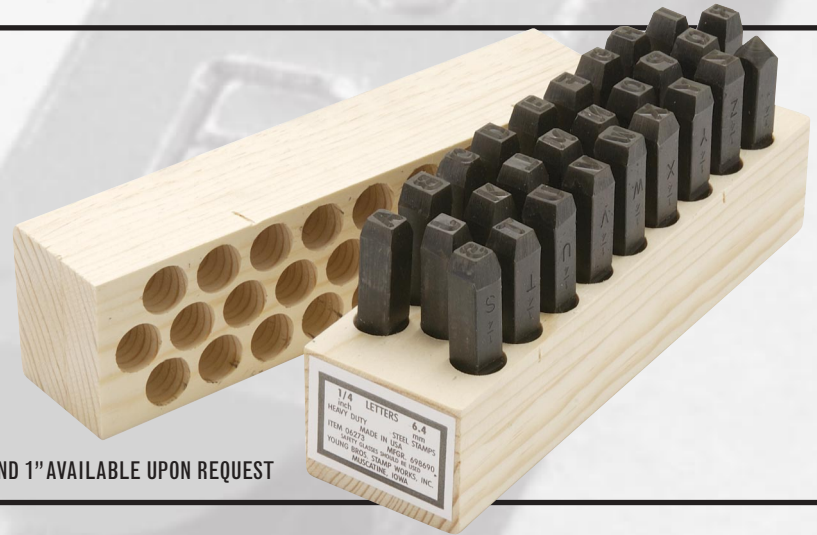


Single Heavy Duty pieces can be purchased in sizes listed below. When ordering single stamps, please use the item code from the stamp set plus the character required.

Example: LETTER 05273 – X FIGURE 05093 – 7

LETTER SETS (27 CHARACTERS)

Item Code	Size Inch	Wt. Lbs.	Size of Steel Sq.	Length
00273	1/32	1-1/2	1/4	2-3/8
01273	1/16	1-1/2	1/4	2-3/8
02273	3/32	2-1/4	5/16	2-1/2
03273	1/8	2-1/4	5/16	2-1/2
04273	5/32	3	3/8	2-3/4
05273	3/16	3	3/8	2-3/4
06273	1/4	4-1/2	7/16	3
07273	5/16	6	1/2	3
08273	3/8	8	9/16	3-1/8
09273	1/2	18-1/2	3/4	3-3/4
10273	5/8	25	7/8	3-3/4



* 3/4" AND 1" AVAILABLE UPON REQUEST

FIGURE SETS (9 CHARACTERS)

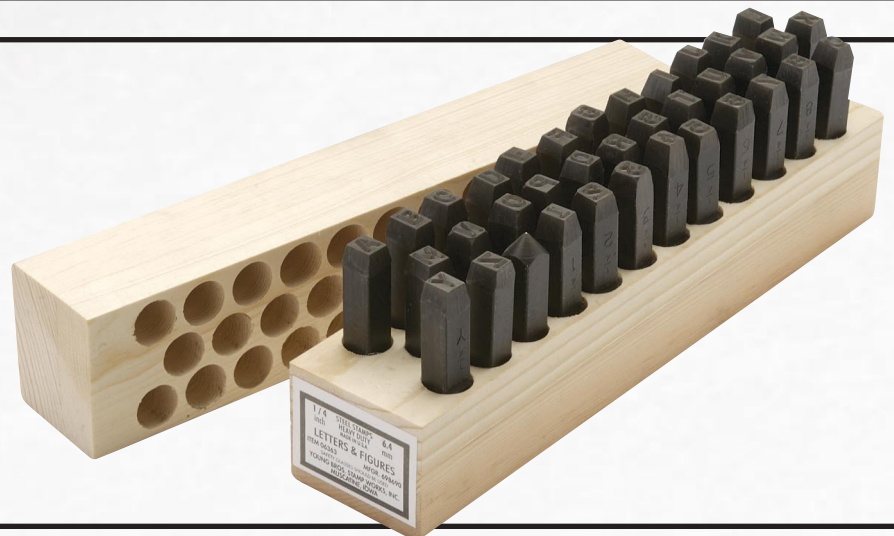
Item Code	Size Inch	Wt. Lbs.	Size of Steel Sq.	Length
00093	1/32	1/2	1/4	2-3/8
01093	1/16	1/2	1/4	2-3/8
02093	3/32	3/4	5/16	2-1/2
03093	1/8	3/4	5/16	2-1/2
04093	5/32	1	3/8	2-3/4
05093	3/16	1	3/8	2-3/4
06093	1/4	1-1/2	7/16	3
07093	5/16	2	1/2	3
08093	3/8	2-1/2	9/16	3-1/8
09093	1/2	6-3/4	3/4	3-3/4
10093	5/8	8	7/8	3-3/4



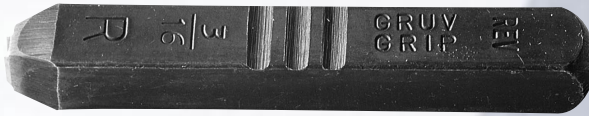
* 3/4" AND 1" AVAILABLE UPON REQUEST

HEAVY DUTY COMBINATION (36 CHARACTERS)

Item Code	Size Inch	Wt. Lbs.	Size of Steel Sq.	Length
00363	1/32	2	1/4	2-3/8
01363	1/16	2	1/4	2-3/8
02363	3/32	3	5/16	2-1/2
03363	1/8	3	5/16	2-1/2
04363	5/32	4	3/8	2-3/4
05363	3/16	4	3/8	2-3/4
06363	1/4	6	7/16	3
07363	5/16	8	1/2	3
08363	3/8	10-1/2	9/16	3-1/8
09363	1/2	25-1/4	3/4	3-3/4



REVERSED



Single Reversed pieces can be purchased in sizes listed below. When ordering single stamps, please use the item code from the stamp set plus the character required.

Example: LETTER 07274 – C FIGURE 07094 – 8

REVERSED

For use in marking plastic molds, rubber molds, thin metal patterns, forging dies, etc.

Produces a reversed impression in the mold which makes a raised letter on the molded product.

Character identification and size, three thumb grooves.

LETTER SETS (27 CHARACTERS)

Item Code	Size Inch	Wt. Lbs.	Size of Steel Sq.	Length
00274	1/32	1-1/2	1/4	2-3/8
01274	1/16	1-1/2	1/4	2-3/8
02274	3/32	2-1/4	5/16	2-1/2
03274	1/8	2-1/4	5/16	2-1/2
04274	5/32	3	3/8	2-3/4
05274	3/16	3	3/8	2-3/4
06274	1/4	4-1/2	7/16	3
07274	5/16	6	1/2	3
08274	3/8	8	9/16	3-1/8
09274	1/2	10-3/4	5/8	3-3/8

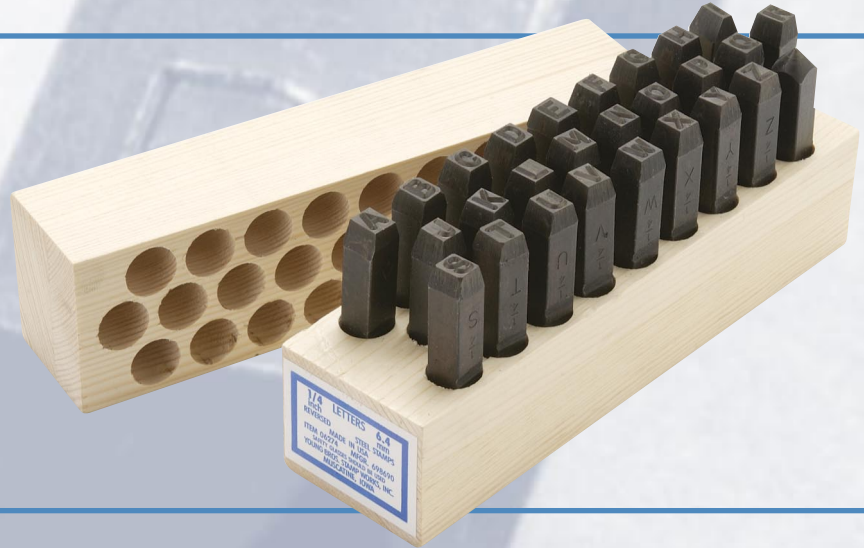


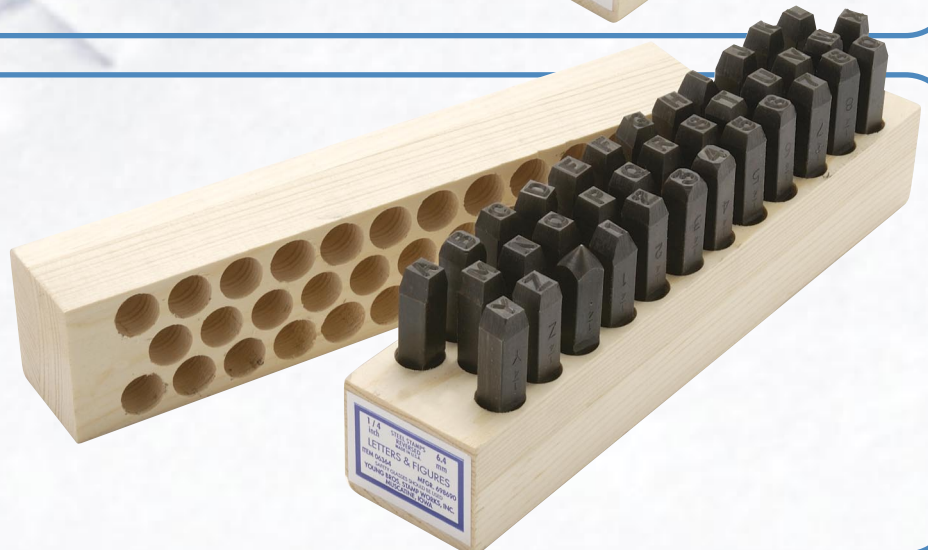
FIGURE SETS (9 CHARACTERS)

Item Code	Size Inch	Wt. Lbs.	Size of Steel Sq.	Length
00094	1/32	1/2	1/4	2-3/8
01094	1/16	1/2	1/4	2-3/8
02094	3/32	3/4	5/16	2-1/2
03094	1/8	3/4	5/16	2-1/2
04094	5/32	1	3/8	2-3/4
05094	3/16	1	3/8	2-3/4
06094	1/4	1-1/2	7/16	3
07094	5/16	2	1/2	3
08094	3/8	2-1/2	9/16	3-1/8
09094	1/2	4-3/4	5/8	3-3/8



REVERSED COMBINATION (36 CHARACTERS)

Item Code	Size Inch	Wt. Lbs.	Size of Steel Sq.	Length
00364	1/32	2	1/4	2-3/8
01364	1/16	2	1/4	2-3/8
02364	3/32	3	5/16	2-1/2
03364	1/8	3	5/16	2-1/2
04364	5/32	4	3/8	2-3/4
05364	3/16	4	3/8	2-3/4
06364	1/4	6	7/16	3
07364	5/16	8	1/2	3
08364	3/8	11	9/16	3-1/8
09364	1/2	15	5/8	3-3/8



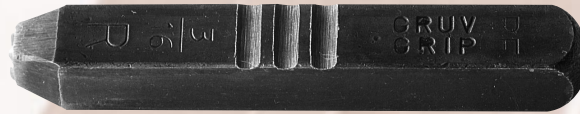
ROUND FACE-FULL CHARACTER

The cutting edge of the character is 1/32" radius, with a 40° bevel.

Rounded character stamp makes low-stress impressions suitable for use anywhere metal strength is critical. The aircraft, missile, oil supply and nuclear power industries depend on these stamps to avoid risk of fracture from too sharp an imprint.

Character identification and size, three thumb grooves.

ROUND FACE-FULL CHARACTER



Single Round Face-Full pieces can be purchased in sizes listed below. When ordering single stamps, please use the item code from the stamp set plus the character required.

Example: LETTER 06275 – B FIGURE 06095 – 3

LETTER SETS (27 CHARACTERS)

Item Code	Size Inch	Wt. Lbs.	Size of Steel Sq.	Length
03275	1/8	2-1/4	5/16	2-1/2
05275	3/16	3	3/8	2-3/4
06275	1/4	4-1/2	7/16	3
07275	5/16	6	1/2	3
08275	3/8	8	9/16	3-1/8
09275	1/2	18-1/2	3/4	3-3/4



FIGURE SETS (9 CHARACTERS)

Item Code	Size Inch	Wt. Lbs.	Size of Steel Sq.	Length
03095	1/8	3/4	5/16	2-1/2
05095	3/16	1	3/8	2-3/4
06095	1/4	1-1/2	7/16	3
07095	5/16	2	1/2	3
08095	3/8	2-1/2	9/16	3-1/8
09095	1/2	6-3/4	3/4	3-3/4



ROUND FACE-FULL CHARACTER COMBINATION (36 CHARACTERS)

Item Code	Size Inch	Wt. Lbs.	Size of Steel Sq.	Length
03365	1/8	3	5/16	2-1/2
05365	3/16	4	3/8	2-3/4
06365	1/4	6	7/16	3
07365	5/16	8	1/2	3
08365	3/8	10-1/2	9/16	3-1/8
09365	1/2	23	3/4	3-3/4



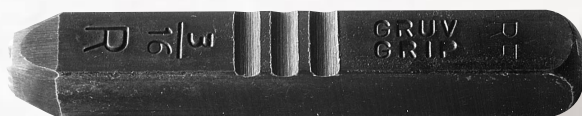
ROUND FACE-DOT DESIGN

ROUND FACE-DOT DESIGN

The cutting edge of the character is 1/32" radius, with a 40° bevel.

For use in aircraft, missile, oil supply and nuclear power industries and other applications where lowest stress impressions are critical.

Round face-dot design eliminates risk of fracture from too sharp an impression. Character identification and size, three thumb grooves.



Single Round Face-Dot pieces can be purchased in sizes listed below. When ordering single stamps, please use the item code from the stamp set plus the character required.

Example: LETTER 03276 – T FIGURE 03096 – 5

LETTER SETS (27 CHARACTERS)

Item Code	Size Inch	Wt. Lbs.	Size of Steel Sq.	Length
03276	1/8	2-1/4	5/16	2-1/2
05276	3/16	3	3/8	2-3/4
06276	1/4	4-1/2	7/16	3
07276	5/16	6	1/2	3
08276	3/8	8	9/16	3-1/8
09276	1/2	18-1/2	3/4	3-3/4



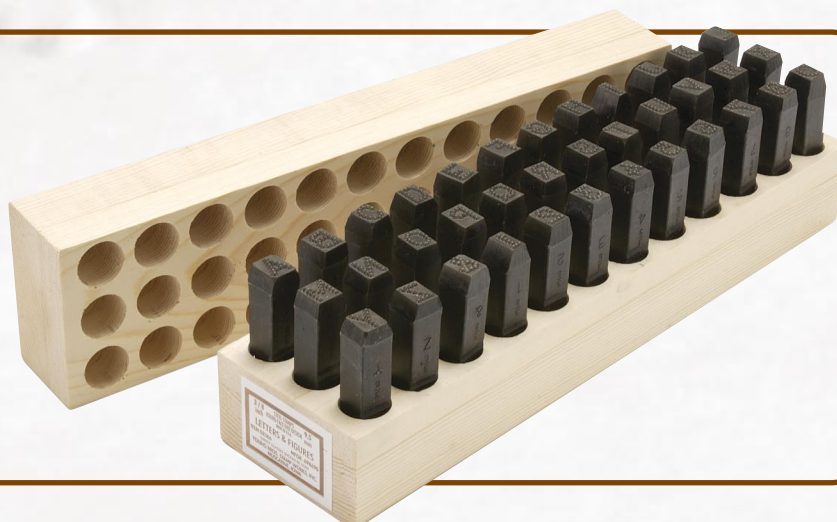
FIGURE SETS (9 CHARACTERS)

Item Code	Size Inch	Wt. Lbs.	Size of Steel Sq.	Length
03096	1/8	3/4	5/16	2-1/2
05096	3/16	1	3/8	2-3/4
06096	1/4	1-1/2	7/16	3
07096	5/16	2	1/2	3
08096	3/8	2-1/2	9/16	3-1/8
09096	1/2	6-3/4	3/4	3-3/4



ROUND FACE-DOT DESIGN COMBINATION (36 CHARACTERS)

Item Code	Size Inch	Wt. Lbs.	Size of Steel Sq.	Length
03366	1/8	3	5/16	2-1/2
05366	3/16	4	3/8	2-3/4
06366	1/4	6	7/16	3
07366	5/16	8	1/2	3
08366	3/8	10-1/2	9/16	3-1/8
09366	1/2	23	3/4	3-3/4



SPECIAL NEEDS

MISC. SPECIAL NEEDS

Young Bros. offers symbols, fractions, double digits, inspection stamps and other unique markers which can be ordered individually or in sets.

Some items may require a special purchase order.

Single Symbol & Inspection Stamps can be purchased in sizes listed. When ordering single stamps, please use the item code from the stamp set plus the character required.

Example: 03053-*

SYMBOL SETS

Heavy duty 5 piece Symbol set consists of arrow, plus, star, asterisk and pound sign

Item Code	Size Inch	Wt. Lbs.	Size of Steel Sq.	Length
01053	1/16	1/2	1/4	2-3/8
02053	3/32	1/2	5/16	2-1/2
03053	1/8	1/2	5/16	2-1/2
05053	3/16	3/4	3/8	2-3/4
06053	1/4	1	7/16	3
07053	5/16	1-1/2	1/2	3
08053	3/8	1-1/2	9/16	3-1/8
09053	1/2	2-1/4	5/8	3-3/8

SYMBOL & INSPECTION STAMPS

Engineered and manufactured for durability and a sharp impression. In-stock symbols include #, +, ☆, →, and *. Inspection stamps available upon request.



LOCKSMITH SERIES

Locksmith stamps available in stock – “Master”, “Do Not Copy”, and “Do Not Duplicate”, in 1/16” and 3/32” sizes.

Item Code	Size Inch
01 MASTER	1/16
02 MASTER	3/32
01 DNC	1/16
02 DNC	3/32
01 DND	1/16
02 DND	3/32



DOUBLE DIGIT SETS

Heavy duty 10 piece Double digit (number series) stamp set consists of consecutive increments of 10 stamps, i.e. 00-09, 10-19, 20-29, 30-39, 40-49, 50-59, 60-69, 70-79, 80-89, 90-99

Item Code	Size Inch	Wt. Lbs.	Size of Steel Sq.	Length
03103	1/8	1-1/2	3/8	2-3/4
05103	3/16	2	1/2	3
06103	1/4	2-1/2	9/16	3
08103	3/8	3 1/2	5/8	3-3/4



Single Double Digit Stamps can be purchased in sizes listed above. When ordering single stamps, please use the item code from the stamp set plus the character required. Example: 05103-10

FRACTION STAMP SETS

Heavy duty 8 piece Fraction stamp set consists of fractions 1/8, 3/16, 1/4, 3/8, 1/2, 5/8, 3/4, 7/8.

Item Code	Size Inch	Wt. Lbs.	Size of Steel Sq.	Length
03083	1/8	1	3/8	2-3/4
05083	3/16	1-1/2	7/16	3
06083	1/4	2-1/2	1/2	2-7/8



INDIVIDUAL FRACTION STAMPS



Single Fraction Stamps pieces can be purchased in sizes listed. When ordering single stamps, please use the item code from the stamp set plus the character required. Example: 03083 – 1/4

STAMP HOLDERS

Keeps hand safely away from strike.



01117 Holds shanks up to 5/8” square



09997 Holds shanks up to 7/8” square

SALES POWER

Our merchandiser gives you more product in less space for more sales. One hundred forty-four 1/8” size stamps in just one square foot. Four each of letters A-Z plus period and numbers 0-8 (6 & 9 are interchangeable). Individually packed in plastic sleeves. A bright red and white header sign tops this sturdy metal standing or wall mount. Counter standing or wall mount. Item code W144.



BRASS STENCILS

LETTERS ONLY - SINGLE SETS

33 PIECES—A B C D E F G H I J K L M N O P
Q R S T U V W X Y Z &
1 Beginner, 1 Period Ender, 1 Spacer, 1 Period,
1 Comma, and 1 Dash

Item Code	Size
50338	1/2"
75338	3/4"
01338	1"
15338	1-1/2"
02338	2"
25338	2-1/2"
03338	3"
04338	4"
05338	5"
06338	6"
08338	8"
10338	10"
12338	12"

FIGURES ONLY - SINGLE SETS

15 PIECES—1 2 3 4 5 6 7 8 9 0 0
1 Beginner, 1 Plain Ender, 1 Period, and 1 Dash

Item Code	Size
50158	1/2"
75158	3/4"
01158	1"
15158	1-1/2"
02158	2"
25158	2-1/2"
03158	3"
04158	4"
05158	5"
06158	6"
08158	8"
10158	10"
12158	12"

LETTER AND FIGURE SETS

45 PIECES—A B C D E F G H I J K L M N O
P Q R S T U V W X Y Z & 1 2 3 4 5 6 7 8 9 0
1 Beginner, 1 Plain Ender, 1 Period Ender,
2 Spacers, 1 Period, 1 Comma, and 1 Dash

Item Code	Size
50458	1/2"
75458	3/4"
01458	1"
15458	1-1/2"
02458	2"
25458	2-1/2"
03458	3"
04458	4"
05458	5"
06458	6"

BRASS STENCILS

Adjustable and interlocking. Gothic-style characters for horizontal composition. Stencils adjust quickly for perfect character alignment, spacing and clean, bold characters. Use for marking shipments, making signs and other identification.

Single Brass Stencils can be purchased in sizes listed. When ordering single stencils, please use the item code from the stencil set plus the character required. Example: 01338 - V



LETTER AND FIGURE SETS

77 PIECES—AA BB CC DD EE FF GG HH III JJ
KK LL MM NN OO PP QQ RR SS TT UU VV WW XY Y
Z 1 11 22 33 44 55 66 77 88 99 00 &
1 Beginner, 1 Plain Ender, 1 Period Ender,
2 Spacers, 2 Periods, 1 Comma, and 1 Dash

Item Code	Size
50778	1/2"
75778	3/4"
01778	1"
15778	1-1/2"
02778	2"
25778	2-1/2"
03778	3"
04778	4"
05778	5"
06778	6"

LETTER AND FIGURE SETS

92 PIECES—AAA BB CC DD EEEE FF GG HH III JJ
KK LL MM NNN OOO PP Q RR SSS TT UU VV WW XX YY
ZZ && 111 22 33 44 55 66 77 88 99 000
1 Beginner, 1 Period Ender, 1 Plain Ender, 3 Spacers,
2 Periods, 1 Comma, and 1 Dash

Item Code	Size
50928	1/2"
75928	3/4"
01928	1"
15928	1-1/2"
02928	2"
25928	2-1/2"
03928	3"
04928	4"
05928	5"
06928	6"



TAGS & CHECKS

Used for all sorts of identification: machines, coat rooms, keys, valves, etc. Variety of shapes and sizes available upon request. Special purchase order may be necessary for some items.



S T E E L T Y P E

STEEL TYPE AND STEEL TYPE HOLDERS

Combine letter and/or figure series for marking serials, dates, or part codes in one easy stroke with perfect character alignment.

May be purchased individually or as a complete marking kit with case.

Kit includes letters, numbers, ampersand, slash, period, comma, spacers, dash and type holder. See detailed chart below.

INDIVIDUAL STEEL TYPE ROUND FACE CHARACTERS

To order Round Face individual steel type use item code for Marking Kit plus character required. Example: 316RF – A 316RF – 7 316RF – SPACER

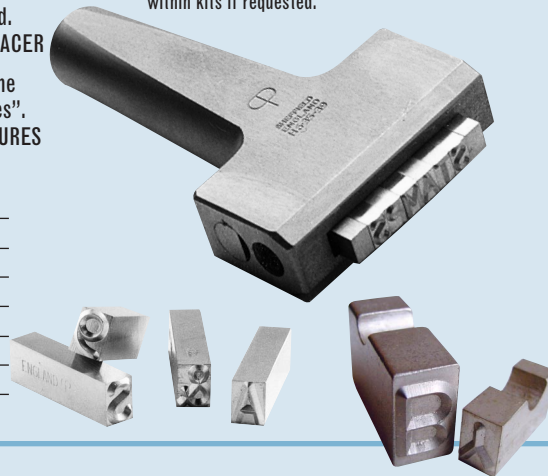
To order full sets of letters or figures use the item code plus the word "Letters" or "Figures". Example: 316RF – LETTERS or 316RF – FIGURES

Item Code	Character Size	Blank Size
ROUND FACE-FULL CHARACTER		
18RF	1/8	3/16 x 1/4 x 7/8
316RF	3/16	1/4 x 3/8 x 3/4
ROUND FACE-DOT DESIGN CHARACTER		
18RD	1/8	3/16 x 1/4 x 7/8
316RD	3/16	1/4 x 3/8 x 3/4

MARKING KITS WITH HOLDER

Item Code	Size	No. Pieces Plus Holder #
SHARP FACE CHARACTER		
11129	1/16	112 29
21129	3/32	112 29
31129	1/8	112 29
51069	3/16	106 39
61069	1/4	106 40
81069	3/8	106 57
ROUND FACE-FULL CHARACTER		
31069RF	1/8	106 39
51069RF	3/16	106 40
ROUND FACE-DOT DESIGN CHARACTER		
31069RD	1/8	106 39
51069RD	3/16	106 40

* #29 & #39 Holders can be interchanged within kits if requested.



STEEL TYPE HOLDERS - CHARACTER CAPACITY SIZE

Item Code	Holder Number	1/16	3/32	1/8	3/16	1/4	3/8
FOR SHARP FACE STEEL TYPE							
29009	29	18	12	9	6		
39009	39	24	16	12	8		
40009	40					6	
57009	57						6
FOR ROUND FACE STEEL TYPE							
29009	29				6		
39009	39				8		
40009	40					6	

INDIVIDUAL STEEL TYPE SHARP FACE CHARACTERS

To order Sharp Face individual steel type use item code for Marking Kit size plus character required. Example: 31129 – A 31129 – 3 31129 – SPACER

To order full sets of letters or figures use the item code plus the word "Letters" or "Figures". Example: 31129 – LETTERS or 31129 – FIGURES

Character Size	Blank Size
1/16	1/16 x 1/4 x 7/8
3/32	3/32 x 1/4 x 7/8
1/8	1/8 x 1/4 x 7/8
3/16	3/16 x 1/4 x 7/8
1/4	1/4 x 3/8 x 3/4
3/8	3/8 x 5/8 x 1

Spacers available for 1/16, 3/32, 1/8, 3/16, 1/4, 3/8

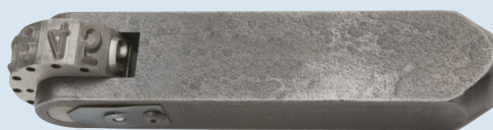
DETAILED COMPOSITION OF THE STANDARD 112 PIECE FOUNT SET

A	A	A	B	B	C	C	D	D	E
E	E	E	F	F	G	G	H	H	I
I	I	J	J	K	K	L	L	L	M
M	N	N	N	O	O	O	P	P	Q
R	R	R	S	S	S	T	T	U	U
U	V	W	W	X	X	Y	Z	&	/
/	-	-	,	,	.	.	1	1	1
1	2	2	2	2	3	3	3	4	4
4	4	5	5	5	6	6	6	7	7
7	8	8	8	9	9	9	0	0	0



ROTARY WHEEL STAMP

Complete letters or figures in a single wheel design. Character changes can be made quickly by simply rotating the type wheel with thumb and forefinger. Highest quality, well constructed and well balanced. Available in 1/16" through 3/8".



YOUNG BROS. STAMP WORKS INC.

1415 HOWARD AVENUE
P.O. BOX 75
MUSCATINE, IOWA 52761
PHONE: 800.553.8248
FAX: 800.982.0011
www.youngbrosstampworks.com

